

Mifare and RFID terminals, readers, power supplies and communication units

**Power Supplies and Communication Units**

Code	Description
GCnv2	RS422-RS232 converter & 12V/4A SMPS
NWChr2	Battery charger with communication unit (used with NWHT2, see below)
GTcpIp	RS422/RS485 - ethernet converter & 12V/4A SMPS
Rfm12L	Long range RF modem (50m-10km)

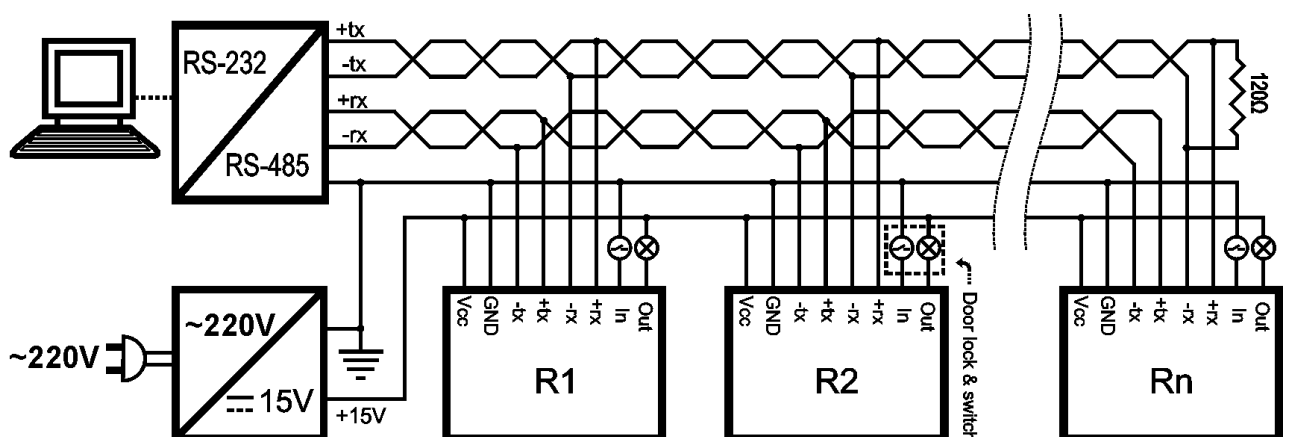
**Off-Line (Stand-alone) Terminals**


Code	Description
Irt23M	Intelligent terminal with 16x2 characters LCD, internal Mifare reader
Irt11M	Intelligent Mifare card reader terminal
Irt23R	Intelligent terminal with 16x2 characters LCD, internal RFID reader
Irt11R	Intelligent RFID Card reader terminal
NWHT2	Intelligent hand-held RFID Card Reader (night watch system)


**On-Line Readers**


Code	Description
Rdr11M	Mifare reader with serial interface. Same h/w as Irt11M, no RTC, no memory.
Rdr23M	Mifare reader with serial interface and 16x2 characters LCD. Same h/w as Irt23M, no RTC, no memory.
Usb11M	Mifare reader with USB interface
Rdr11R	125khz RFID reader with serial interface. Same h/w as Irt11R, no RTC, no memory.
Rdr23R	125khz RFID reader with serial interface and 16x2 characters LCD. Same h/w as Irt23R, no RTC, no memory.
Usb11R	125khz RFID reader with USB interface.


Typical access control system connection diagram





GCnv2		RS-422/RS-232 converter with SMPS supply
Host/GCnv2 comm.	Rs-232	
Terminals/GCnv2 comm.	Rs-422 or Rs-485	
Supply Voltage	AC 100V - 220 V	
SMPS operating frequency	100 kHz Flyback	
Voltage/Current	Delivers DC 14V/3A to the connected terminals	
Power Consumption	2 W	
Dimensions	118 x 67 x 47 mm	
Weight	0.5 kg	


GTcplp		RS485 to ethernet bridge with SMPS power supply
Host/GTCPIP comm.	10Mbps Ethernet, TCP/IP	
Terminals/GTCPIP comm.	Rs-422 or Rs-485	
Supply Voltage	AC 100V - 220 V	
SMPS operating frequency	100 kHz Flyback	
Voltage/Current	Delivers DC 14V/3A to the connected terminals	
Power Consumption	2 W	
Dimensions	118 x 67 x 47 mm	
Weight	0.5 kg	


Irt23M, Rdr23M		Terminal with 2 lines x 16 characters LCD, keyboard and Mifare reader
Communication	Rs-422 or Rs-485, 19200 bps, max. 300m cable length	
Communication Protocol	CRC checked binary frames. 32 bits encryption. (on request)	
Reader	Internal Mifare 13.56Mhz (ISO14443A) reader	
Reading Distance	Up to 7 cm	
Voltage & Consumption	DC 12÷20 V, 2 W (15V / 150ma)	
RTC battery life	10 years (n/a in Rdr23M)	
Memory	128kB (12kB program, 116kB data) (n/a in Rdr23M)	
Record capacity	8000 event records (n/a in Rdr23M)	
Keyboard	6 keys (<-, ->, +, -, Clr, OK)	
Screen	2 lines x 16 characters (totally 32) LED illumination LCD screen	
Digital outputs	1 MOSFET over-current protected output, max. 3A, function assignment possible	
Digital inputs	1 over-voltage protected TTL input, function assignment possible	
Software	Access control or factory automation. On-line updates thru own communication port possible.	
Indications	Piezoelectric buzzer	
Dimensions & Weight	104 x 72 x 30 mm, 0.3 kg	

Irt11M, Rdr11M		Terminal with Mifare reader
Communication	Rs-422 or Rs-485, 19200 bps, max. 300m cable length	
Communication Protocol	CRC checked binary frames. 32 bits encryption. (on request)	
Reader	Internal Mifare 13.56Mhz (ISO14443A) reader	
Reading Distance	Up to 5 cm	
Voltage & Consumption	DC 12÷20 V, 2 W (15V / 150ma)	
RTC battery life	10 years (n/a in Rdr11M)	
Memory	128kB (12kB program, 116kB data) (n/a in Rdr11M)	
Record capacity	8000 event records (n/a in Rdr11M)	
Digital outputs	1 MOSFET over-current protected output, max. 3A	
Digital inputs	1 over-voltage protected TTL input, function assignment possible	
Software	Access control or factory automation. On-line updates thru own communication port possible.	
Indications	Piezoelectric buzzer, green and red LEDs	
Dimensions & Weight	88 x 48 x 20 mm, 0.2 kg	

Usb10M		Mifare reader with Usb interface (on-line)
Communication	USB 1.1 (virtual serial port driver available - free)	
Communication Protocol	CRC checked binary frames. 32 bits encryption. (on request)	
Reader	Internal Mifare 13.56Mhz (ISO14443A) reader	
Reading Distance	Up to 5 cm	
Voltage & Consumption	No need for external DC adaptor (powered from USB port)	
Indications	Piezoelectric buzzer, green and red LEDs	
Software	On-line updates thru USB possible	
Dimensions & Weight	88 x 48 x 20 mm, 0.2 kg	

Irt23R, Rdr23R		Terminal with 2 lines x 16 characters LCD, keyboard and RFID reader
Communication	Rs-422 or Rs-485, 19200 bps, max. 300m cable length	
Communication Protocol	CRC checked binary frames. 32 bits encryption. (on request)	
Reader	Internal 125kHz RFID (Manchester coded) reader	
Reading Distance	Up to 7 cm	
Voltage & Consumption	DC 12÷20 V, 2 W (15V / 150ma)	
RTC battery life	10 years (n/a in Rdr23R)	
Memory	128kB (12kB program, 116kB data) (n/a in Rdr23R)	
Record capacity	8000 event records (n/a in Rdr23R)	
Keyboard	6 keys (<-, ->, +, -, Clr, OK)	
Screen	2 lines x 16 characters (totally 32) LED illumination LCD screen	
Digital outputs	1 MOSFET over-current protected output, max. 3A	
Digital inputs	1 over-voltage protected TTL input, function assignment possible	
Software	Access control or factory automation. On-line updates thru own communication port possible.	
Indications	Piezoelectric buzzer	
Dimensions & Weight	104 x 72 x 30 mm, 0.3 kg	

Irt11R, Rdr11R		Terminal with RFID reader
Communication	Rs-422 or Rs-485, 19200 bps, max. 300m cable length	
Communication Protocol	CRC checked binary frames. 32 bits encryption. (on request)	
Reader	Internal 125kHz RFID (Manchester coded) reader	
Reading Distance	Up to 5 cm	
Voltage & Consumption	DC 12÷20 V, 2 W (15V / 150ma)	
RTC battery life	10 years (n/a in Rdr11R)	
Memory	128kB (12kB program, 116kB data) (n/a in Rdr11R)	
Record capacity	8000 event records (n/a in Rdr11R)	
Digital outputs	1 MOSFET over-current protected output, max. 3A	
Digital inputs	1 over-voltage protected TTL input, function assignment possible	
Software	Access control or factory automation. On-line updates thru own communication port possible.	
Indications	Piezoelectric buzzer, green and red LEDs	
Dimensions & Weight	88 x 48 x 20 mm, 0.2 kg	

Usb10R		RFID reader with Usb interface (on-line)
Communication	USB 1.1 (virtual serial port driver available - free)	
Communication Protocol	CRC checked binary frames. 32 bits encryption. (on request)	
Reader	Internal 125kHz RFID (Manchester coded) reader	
Reading Distance	Up to 5 cm	
Voltage & Consumption	No need for external DC adaptor (powered from USB port)	
Indications	Piezoelectric buzzer, green and red LEDs	
Software	On-line updates thru USB possible	
Dimensions & Weight	88 x 48 x 20 mm, 0.2 kg	